

Asian Philosophies



Asian Philosophies

- No one is ever born, and no one ever dies.
- No one persists through time as the same person.
- Sometimes a child is not a child and a ruler is not a ruler.
- There is something that neither is nor is not.
- Everything is part of everything else – e.g., the universe is part of your fingertip.

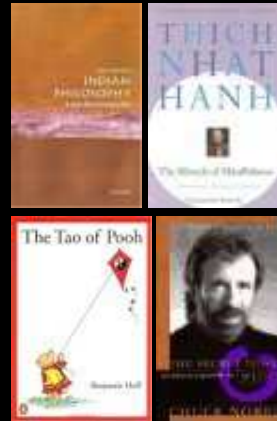
Required Texts



- *The Upanishads*
- *The Bhagavad Gita*
- *Classic Asian Philosophy: A Guide to Essential Texts*
- *Readings in Classical Chinese Philosophy*

Optional Texts

- *Indian Philosophy: A Very Short Introduction*
- *The Miracle of Mindfulness*
- *The Tao of Pooh*
- *On Philosophy in China*
- *The Secret Power Within: Zen Solutions to Real Problems*



Assessments



- Three examinations
 - 20% each
 - not cumulative
- Five Quizzes
 - 5% each
 - multiple choice
- Three Journals
 - 5% each
 - three entries per journal
 - 1 - 2 paragraphs per entry

Disclaimer

- These slides are not a substitute for note-taking.
- The slides are an alternative to chalkboard writing.
- The slides do not contain all (or even most) of the material for which you are responsible.

How to Use Study Questions

- Study Questions provide guidance about what material is important.
- Detailed answers are better than short ones.
 - EX) What did the Aryans introduce to the Dravidians?
 - Poor Answer: War technology; sanskrit; caste system.
 - Better answer: some details about the war technology and its significance; an explanation of what sanskrit is and its role in Aryan culture; information about what some of the castes are and how the system was structured

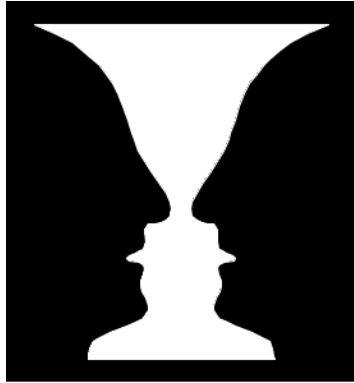
Course Website

<http://people.cohums.ohio-state.edu/jones1736/phil215/phil215.html>

Lecture 0

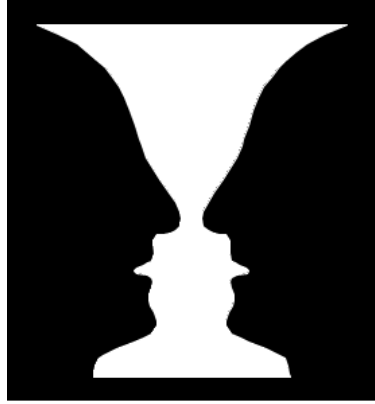
Studying Asian Philosophies

The Rubin Vase



Whenever we perceive the world, we do so by picking out salient features.

Gestalt



- A **gestalt** is a way of perceiving the world

Gestalt



- Sometimes it is difficult to *switch* gestalts.

Gestalt: Sensitivity

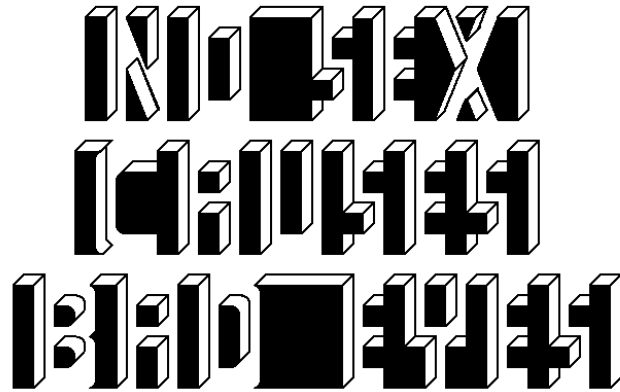


- Sometimes, the gestalt we use is *sensitive to background information*.

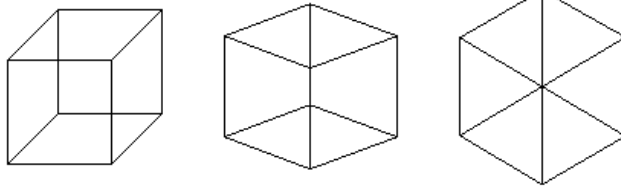
Gestalt: Sensitivity

Eye Examination Chart

Increase distance from chart until it is readable



Gestalt: Natural-ness



Sometimes our training leads us to feel
that some ways of representing the
world are more “natural” than others.

Gestalt Shifts



- What are we doing when we shift gestalts?

Gestalt Model



Gestalt Model

- Asian philosophy does *not* involve a *different kind of thinking* than Western philosophy.

Gestalt Model

- Asian philosophy does not involve a *different kind of thinking* than Western philosophy.
- The difference between Asian and Western philosophy is due to *thinking about different things*, treating certain experiences and problems as *more or less salient*.

Guiding Themes

- We must examine different belief systems *as a whole*



Guiding Themes

- We must examine different belief systems *as a whole*
- Don't assume too much from our own culture



Guiding Themes

- We must examine different belief systems *as a whole*
- Don't assume too much from our own culture
- Asian philosophies provide different ways of understanding the world

